

ITINERARY – 4 DAYS/3 NIGHTS

The river is waiting

If you love the city, but crave a country escape, a change of pace, a chance to reconnect with nature and each other, to wake up to the call of kookaburras and go to sleep to the sound of silence, then a trip to Echuca Moama should be on your must-do list.

Echuca Moama are twin towns, yet one thriving community, nestled on the majestic Murray River.

Only 2.5 hours from Melbourne, yet you will feel like you're a world away!

From our majestic rivers, wide open spaces, winding trails, and living history; to our contemporary food scene, world-renowned wine regions, artisan creators and riverside restaurants, Echuca Moama provides the best of both worlds.

Slow down the pace, move to river time, and explore our backyard on this four-day escape.



LOCATION

Echuca Moama is located 2.5 hours north of Melbourne, 6 hours from Canberra and 8 hours from Sydney (see map on page 7).

POPULATION

Approximately 21,000 (15,000 Echuca, 6,000 Moama)

CLIMATE

Hot and dry summers, mild winters, and warm springs and autumns. Echuca Moama boasts more sunny days than the Gold Coast.

DAY 1 – AWAKEN YOUR SENSES IN ECHUCA MOAMA

Highlights

- Banyule State Forest, 302 Shinbone Alley, Echuca
- Riverside Picnic at Moama Beach, Blair Street, Moama
- Port of Echuca, 74 Murray Esplanade, Echuca
- The American Hotel and Harry O's, 239-249 Hare Street, Echuca

The river called – and you answered! It's time to change your pace and experience river life! Today is a day to awaken your senses to our fresh country air, wide open spaces, and tasty delights. Find your bearings and take your time to smell the red gums (we do red gums here, not roses!).

MORNING

Start your day by heading up the highway for an easy 2.5 hour drive to Echuca Moama. Don't forget to call into the TAC Pause Stops along the way to grab a coffee – a pause from the road might save your life. Either the Bendigo or Heathcote Pause Stop sites are great places to break your journey, depending on which route you are taking. While you're there, phone through to Fuzion Café to order a grazing box for your riverside picnic lunch.

On arrival to town call in at the Echuca Moama Port Visitor Information Centre, meet the locals, get their insider tips and pick up maps and brochures to inspire you during your visit. (Located at Shop 1, 41 Murray Esplanade, Echuca)

Then drive around to the Pumphouse Car Park (at 2 Heygarth Street, Echuca). Leave your car here and walk to Banyule State Forest. Yes, we have a forest right in the heart of town! Take the trail behind the Pumphouse building to the levee bank, under the historic bridge and arrive at the forest. Choose your own adventure on one of the many trails that take you through the towering gums and alongside the Murray River.



AFTERNOON

After your walk, hop back in the car and return to Fuzion Cafe to collect your grazing box. Drive across the bridge to Moama Beach, for your riverside picnic lunch. This is one of the Murray's most picturesque picnic spots. Set up on the lush lawn overlooking the sandy beach and river, and sip and savour as you observe the abundance of bird life and watch the boats and paddlesteamers pass you by.

Drive to the Port of Echuca and spend the afternoon wandering the historic streetscapes. Pick up some sweet treats at the Port Ice Creamery and the most delectable homemade fudge from the Penny Arcade. Meander down to Riverboat Dock and view the paddlesteamers and houseboats lining the river bank, while your senses engage with the cacophony of paddlesteamer whistles and the bursts of steam as they prepare to sail.

Check in to your accommodation (one of the great suggestions on the last page of this guide) and freshen up before heading out for dinner.

EVENING

For a smoking hot dinner, head to Harry O's American BBQ at The American Hotel, Echuca - or 'The Yank' as it is affectionately known by locals. Harry O's serves up slow-cooked, locally sourced smoked meats, homemade sausages, delicious sides, and everyone's favourite, the Yabby Po'boy! The American also stocks the largest craft beer selection in town. Make sure you buy a growler to take away and enjoy back at your accommodation.

DAY 2 – SIP AND SAVOUR

Highlights

- Sunrise Paddleboard on the Murray*, Echuca East Boat Ramp, 4-8 Goulburn Rd
- PS Pevensey, Echuca Wharf
- Port 53 Restaurant, Echuca
- Echuca Distillery and Bar Lee, 555 High Street
- Port of Echuca After Dark Tour, 74 Murray Esplanade,

*Available all year 'round

Located in the Murray Riverina food bowl and surrounded by two defined wine regions and a thriving community of local producers and artisan creators, today is all about savouring our local produce, meeting our makers, and creating precious moments with your loved one.

MORNING

Today starts with an experience that will ground you and take your breath away. Join a guided sunrise paddleboard tour down the Murray River. Watch the sun soar above the treeline and reflect golden light onto the water, turning it into liquid glass. It's just you, the water, the bird call and nature. An experience you will never forget! Leave the water and head to Essen, Echuca for a delicious breakfast designed around seasonal local produce - the perfect place to start your day of food, wine and quality time. After breakfast, grab a takeaway coffee and wander down to the Aquatic Reserve, Echuca. Sit on the grassy banks of the lake as you caffeinate, before making your way up to Echuca Wharf for your paddlesteamer cruise experience.

AFTERNOON

Start your afternoon indulging in one of our iconic experiences, with a 1 hour cruise onboard Echuca Paddlesteamers PS Pevensey, starting at Echuca Wharf. Step back in time to discover what riverboat life was all about. Explore the cabins, chat with the engineer, or join the skipper for a steer in the wheelhouse! As you disembark, make your way around the corner to Port 53 Restaurant, where Creole and Cajun culture inspires soul food which is both comforting and exciting. Savour a delicious meal featuring local produce and wine. Finish the afternoon wandering High Street, picking up some local delights from Echuca Chocolate Company and the Echuca Heritage Sweet Co. Don't forget to taste Echuca's famous fudge, made at The Olde Penny Arcade.

EVENING

After freshening up for the magical night that awaits, venture into High Street to contemporary eatery, Bar Lee at the Echuca Distillery. Order the 'Feed Us' menu, served grazing style down the middle of the table, and a tasting flight of gin, vodka or agave, all distilled onsite. Found a new favourite? Purchase a bottle to take with you and relive this experience again at home. As darkness descends, it is time to experience the Port After Dark Tour. Starting at the Port of Echuca Discovery Centre, join your guide and journey back in time to the 1860s, uncovering the spirits of the Murray and the dark secrets of Echuca's past. Explore hidden places as you hear stories of greed, murder and betrayal.



DAY 3 – A TALE OF TWO RIVERS

Highlights

Echuca Moama is where the rivers meet, and they form a huge part of our story. Today you will discover the Murray and Campaspe Rivers from all angles – on a riverside walk, dining with river views, learning their stories at the Port of Echuca Discovery Centre and Echuca Wharf, and riding alongside them on a wine ride.

MORNING

Experience nature's alarm clock on a sunrise walk around Echuca's 6km Scenic Loop Trail. Walk the river at golden hour, view the junction where the Murray and Campaspe Rivers meet, and witness ancient indigenous sites, such as scarred trees, shell middens and oven mounds.

Savour a riverside breakfast overlooking the Campaspe River in the quaint courtyard at The Black Pudding Cafe, Echuca, before wandering down to the Port of Echuca Discovery Centre to live the stories of Echuca's riverboat days. Walk out onto the historic Echuca Wharf, and imagine what life was like when Echuca was one of the largest ports in Australia.

AFTERNOON

It's time to relish and ride! Take a Green Pedal eBike winery tour from Echuca's Historic Port, over the bridge and alongside the Campaspe and Murray Rivers, through the vines, arriving at St Anne's Winery in Moama. Enjoy wine tastings and purchase a local produce board to relish on the expansive lawns overlooking the lake, before your return ride home.

EVENING

Tonight, venture down to The Mill, a vibrant neighbourhood gathering space in the heart of Echuca where rustic charm meets contemporary industrial glam, in this 1881 former flour mill. The menu features modern Australian share plates and craft beers.

- Scenic Loop Trail, Crofton Street.
- Port of Echuca Discovery Centre and Wharf, 74 Murray Esplanade.
- Green Pedal winery tour to St Anne's Winery, Murray Esplanade.
- The Mill, 2 Nish Street.



DAY 4 - THE JOURNEY ONWARDS

Highlights

Whether it's time to go home or continue your journey onto your next stop, there's no hurry to leave. While you're in Echuca Moama, you're still on river time! Enjoy a cruisey morning in town before exploring our region's outdoor gallery. We hope to see you again soon!

- The Sweet Meadow Café, 640 High Street
- Echuca's Boutique Shopping, High Street
- Rochester and the Silo Art Trail, 18 Ramsay Street, Rochester

MORNING

After checking out of your accommodation, breakfast today is at Sweet Meadow, a vegan cafe in Echuca's Port precinct that is housed in a renovated historic cottage. After breakfast, it's time for a boutique shopping experience. Wander Echuca's heritage High Street, home to divine gift stores, beautiful boutiques, new and secondhand bookshops, historic bakeries, and local produce tastings. We know you will be surprised by the quality of shopping in Echuca. As morning draws to an end, it's time to wave goodbye to Echuca. It's time for one last road trip. As you head south, you reach the charming town of Rochester, just 25km from Echuca.

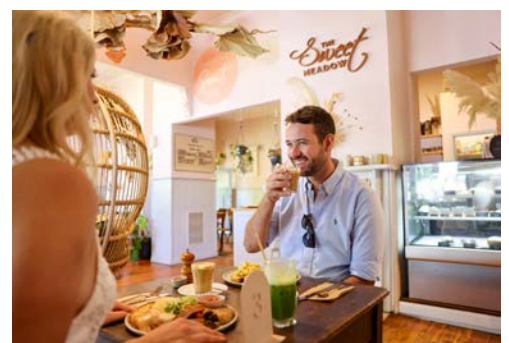
AFTERNOON

As you enter Rochester, you will be greeted by some giant - yet friendly - faces. Stop at the towering GrainCorp Art Silos to take a closer look and the magnificent works created by renowned large-scale mural artist, Jimmy D'vate. The three painted silos feature endemically threatened wildlife species that are native to the local area - the azure kingfisher, wrist-winged squirrel glider and the duck-billed platypus. Leave the car behind, because Rochester is best explored on foot.

For lunch, dine at the historic Shamrock Hotel, one of the best pub meals in the region, and soak up the country hospitality in this late Victorian stunner. After a satisfying lunch wander towards the Gillies and Moore Street intersection and view the stunning wood carvings, before turning down Moore Street to visit Mural Park, where you can marvel at some of the 30+ painted murals that are located throughout Rochester. Mural Park showcases some of the winning murals from the Rochester Mural Festival, which is held annually in March. Head back towards Gillies Street and discover Iddles Lane, where you will learn the story of Rochester local legend, the highly respected former Victorian homicide detective, Ron Iddles.

WHERE THE JOURNEY TAKES YOU

If you're travelling home towards Melbourne, you can travel from Rochester to Colbinabbin to view its magnificent six-silo masterpiece from the Colbinabbin Art Silos viewing platform. You are now just minutes away from Heathcote and the highway back to Melbourne. We hope we have been able to fill a small piece of your heart, and that we see you again soon when the river next calls.



WHERE TO STAY IN ECHUCA



We have places to suit every taste

FOR RIVER VIEWS

CocknBull Boutique Hotel

Located on the banks of the Campaspe River in a historic 1876 building, CocknBull offers five luxurious self-contained apartments. Each apartment boasts a contemporary design, and showcases statement period pieces throughout.

FOR CREATURE COMFORTS

Quest Apartments

Perfectly positioned just a stone's throw from the Murray River and the historic Port Precinct, Quest offers all the creature comforts of home. Recently refurbished, the rooms boast quality furnishings to ensure a comfortable stay.

FOR HISTORIC GRANDEUR

Clocktower Suites

Located in the historic Echuca Post Office building, Clocktower Suites is decorated with a seamless fusion of old and new, to create grand spaces, magnificent staircases and 16ft ceilings.

FOR SOMETHING DIFFERENT

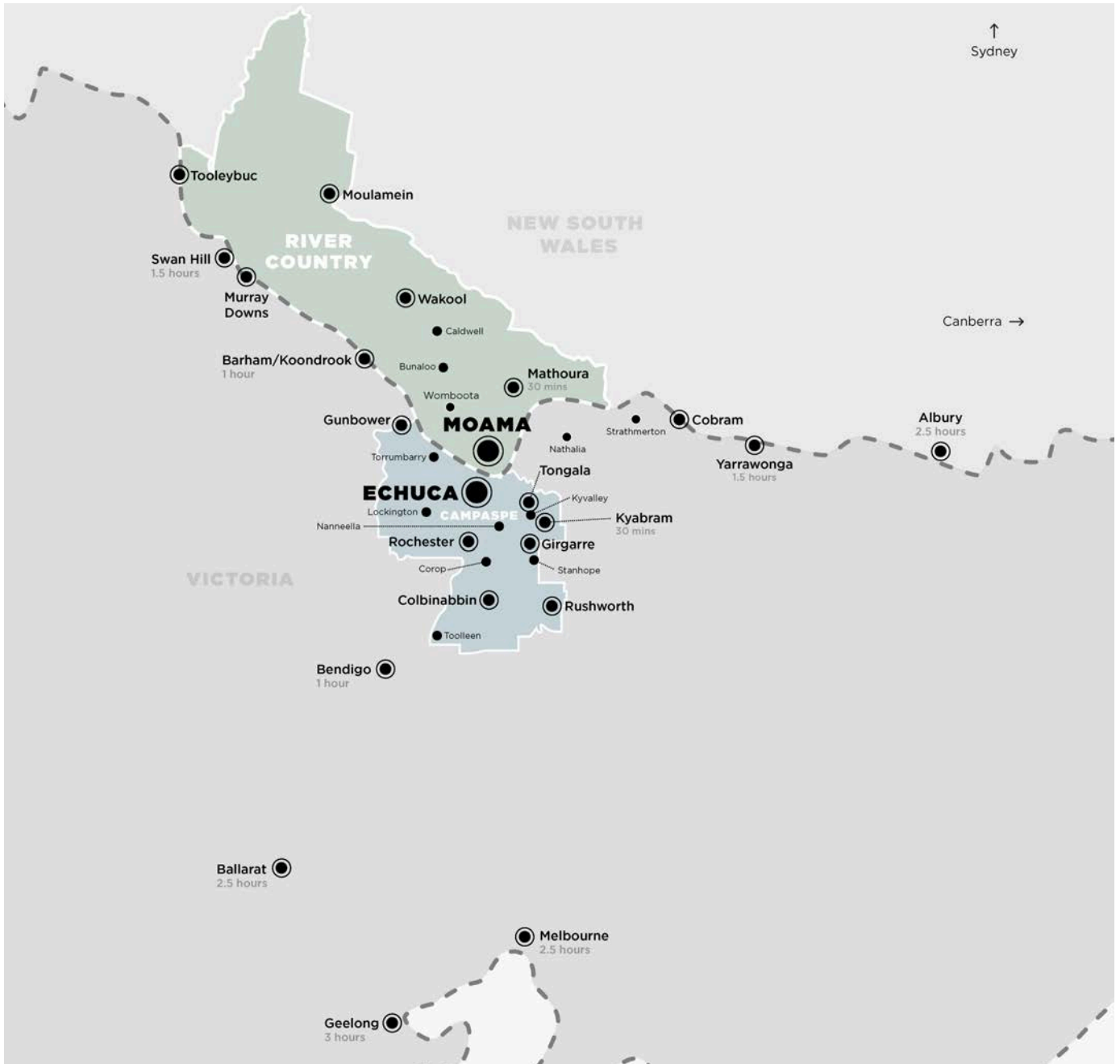
The Old Wesley




Stay in an immaculately renovated former church in the heart of Echuca. The Old Wesley is a luxurious home away from home, featuring an inground swimming pool, outdoor living area, high-end entertainment system.

Browse the full range of accommodation options here:

www.echucamoama.com/accommodation

WHERE YOU'LL FIND US



#visitechucamoama   

Book now at
www.echucamoama.com