

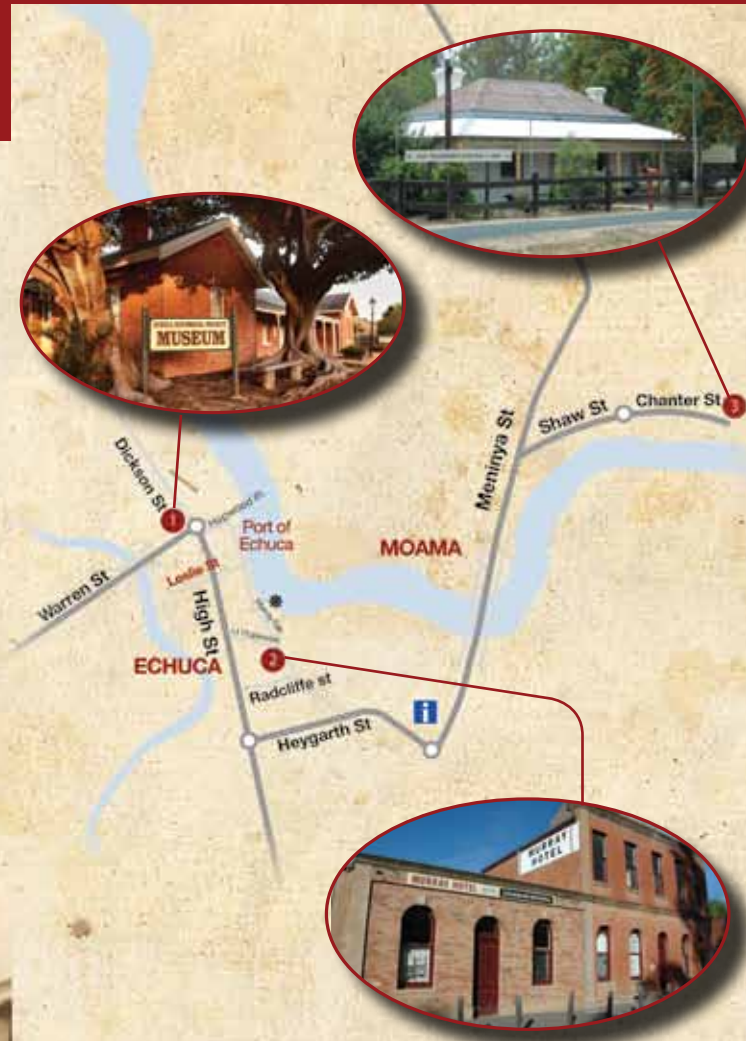
Echuca-Moama's own historians invite you to come explore the rich and compelling story that is our heritage.

In the beginning .. sacred indigenous stories ...then European settlement, tales of victories won and hardships endured ...of paddlesteamers opening up inland Australia ...of our founders, two ex-convicts who created fortunes from river crossings and frontier towns.

Across half a century, our three organisations have traced thousands of events and people. We've recorded the dramatic struggle against drought and flood, colourful characters down through the generations and the quieter accounts of families building communities.

Maybe *your* forebears played a role in the intriguing stories of Echuca-Moama?

HOW TO FIND US



- 1 - Echuca Historical Society Inc.
- 2 - Echuca-Moama Family History Group Inc.
- 3 - Friends of Old Moama

This publication has been funded by the Campaspe Shire Community Plan Implementation Fund and by Murray Shire. Echuca-Moama Heritage Cluster expresses thanks and appreciation.



Tracking down history in Echuca-Moama.....

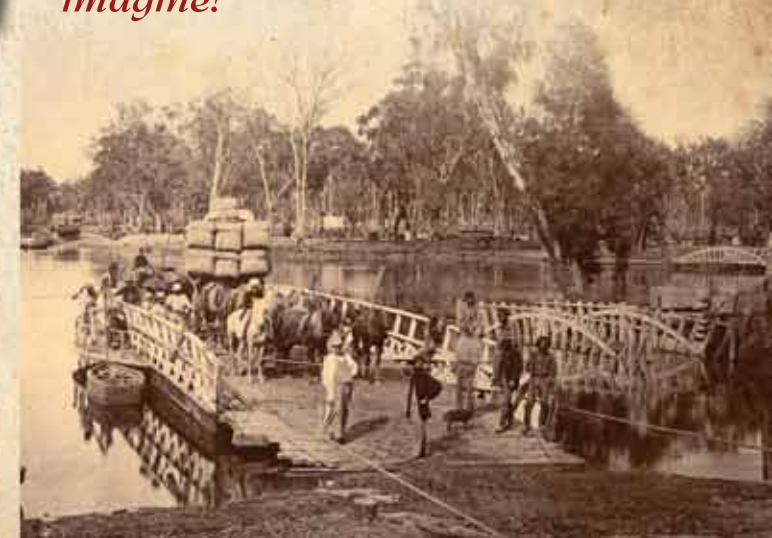
- Echuca Historical Society Inc.
- Echuca-Moama Family History Group Inc.
- Friends of Old Moama

We are the Heritage Cluster of Echuca-Moama – three local volunteer organisations which research and present the fascinating history of development, communities and family life in this district.

We welcome your visit — come and talk to us, look around our attractions, and use our services. Why not think about joining us?

Look inside for full details on what we do and where you can find us (see map on reverse).

There is more to the history of Echuca-Moama than you can ever imagine!



Echuca Historical Society was formed in 1960 to collect and preserve records and work for the restoration and re-opening of the Port of Echuca. The Society is now the key research and consulting body on the history of Echuca-Moama and district.

We offer:

Echuca Historical Museum

Extensive, significant collection of artefacts, 1850 to 1960, in the National Trust-listed former police station c. 1867-1969

• Tour of museum by prior arrangement

• Heritage treasure hunt for children available

• **Travelling exhibitions and special displays**

• **Guides:** for walks and coach commentaries (all by request in advance)

• **Experienced researchers:** appointments preferred as records are not suitable for self-searching (email welcome).

Museum location and Society headquarters:

1 Dickson Street (corner Warren Street, opposite Hopwood Gardens), Echuca

Open: 11am - 3pm every day.

Contacts:

Postal address: PO Box 451 Echuca, 3564

Tel: (03) 5480 1325 AH: 0408 505 662

Email: eh.soc@bigpond.com

Web: www.echucahistoricalsociety.org.au



The Echuca Moama Family History Group has had over thirty years' experience in researching family history and gathering, preserving and making available records such as births, deaths and marriages, hospitals, schools, cemeteries, properties, businesses and postal and electoral rolls.

We offer:

• access to do your own research with experienced researchers

• a quality, inexpensive research service locally and on the net

• one-hour group tours of Echuca Cemetery on request

Location: The historic Murray Hotel, 9 Murray Esplanade, Echuca (in the Port of Echuca precinct).

Open: Mondays and Fridays, 11am - 3pm.

Contacts:

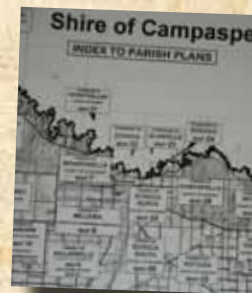
Postal address: P. O. Box 707, Echuca 3564.

Tel: (03) 5482 1047 and (03) 5482 6718 (new members); (03) 5482 1139 (research).

Email: emfhg9@hotmail.com

Web: home.vicnet.net.au/~emhist

Facebook: www.facebook.com/pages/Echuca-Moama-Family-History-Group-Inc/133805373301415



The Friends of Old Moama was formed in 2003 to save and restore the historic telegraph station, c.1850, in Chanter Street, Moama. We now aim to have this part of Chanter Street declared an historic conservation area, with further restorations and improved visitor access.

We offer:

Self - drive tour through Old Moama

Old Moama began when founder James Maiden established a punt in 1845 - the first Murray River crossing in Echuca-Moama. Travel about 1km east along Chanter Street to Maiden's Punt Reserve (information board on right). View the punt approach; the remains of Maiden's Junction Inn, c.1846; the well-signposted Old Telegraph Station (OTS); and the picturesque River Captain's Cottage, west of the OTS.

Open: The OTS and its exhibits, often including morse code demonstrations, are opened free to the public several times a year, including NSW Heritage Week and NSW History Week. For open day dates or alternative arrangements for group viewing:

Contacts:

Postal address: P. O. Box 293 Moama 2731

Tel: A/H (03) 5480 7878; day 1800 804 446

Email: info@echucamoama.com

Web: www.echucamoama.com

Murray Shire (owners of the OTS):

Tel: (03) 5884 3302

Web: www.murray.nsw.gov.au

